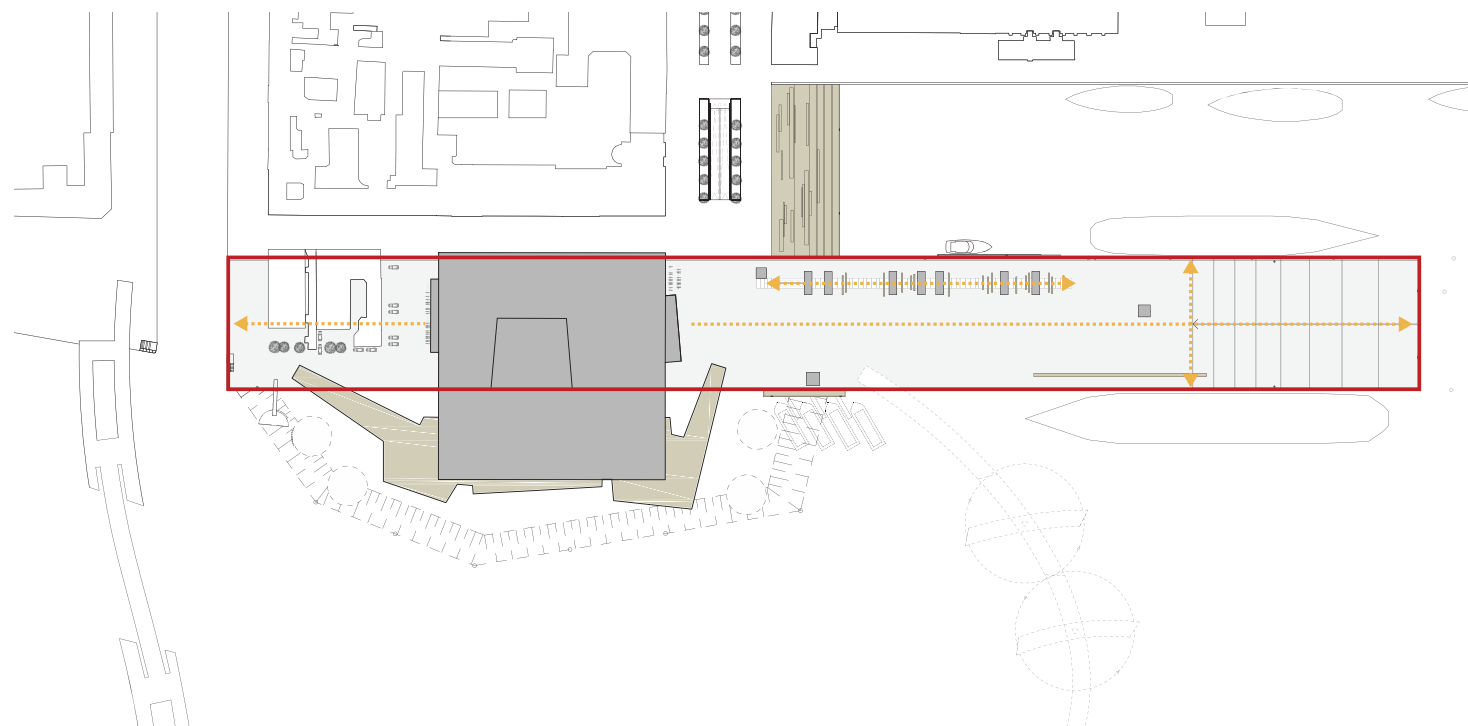


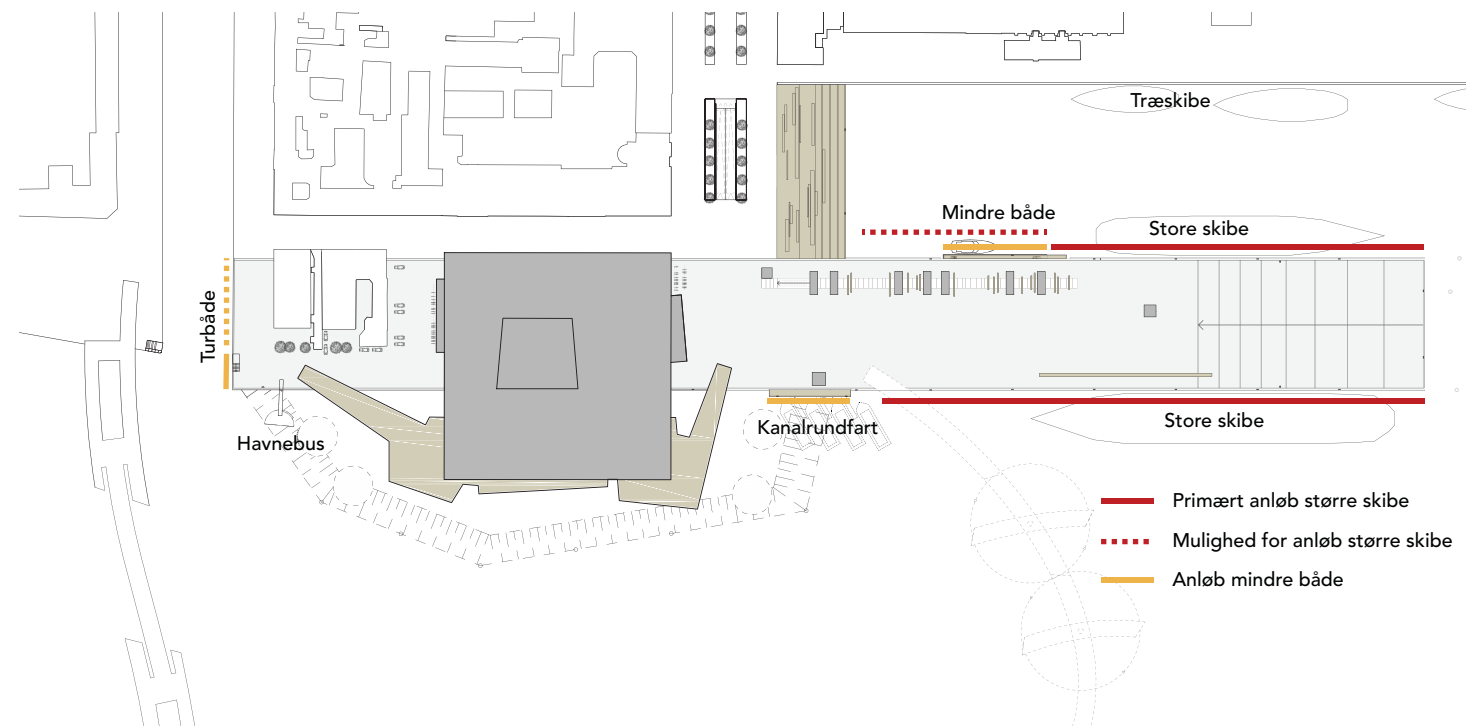


KVÆSTHUSPROJEKTET

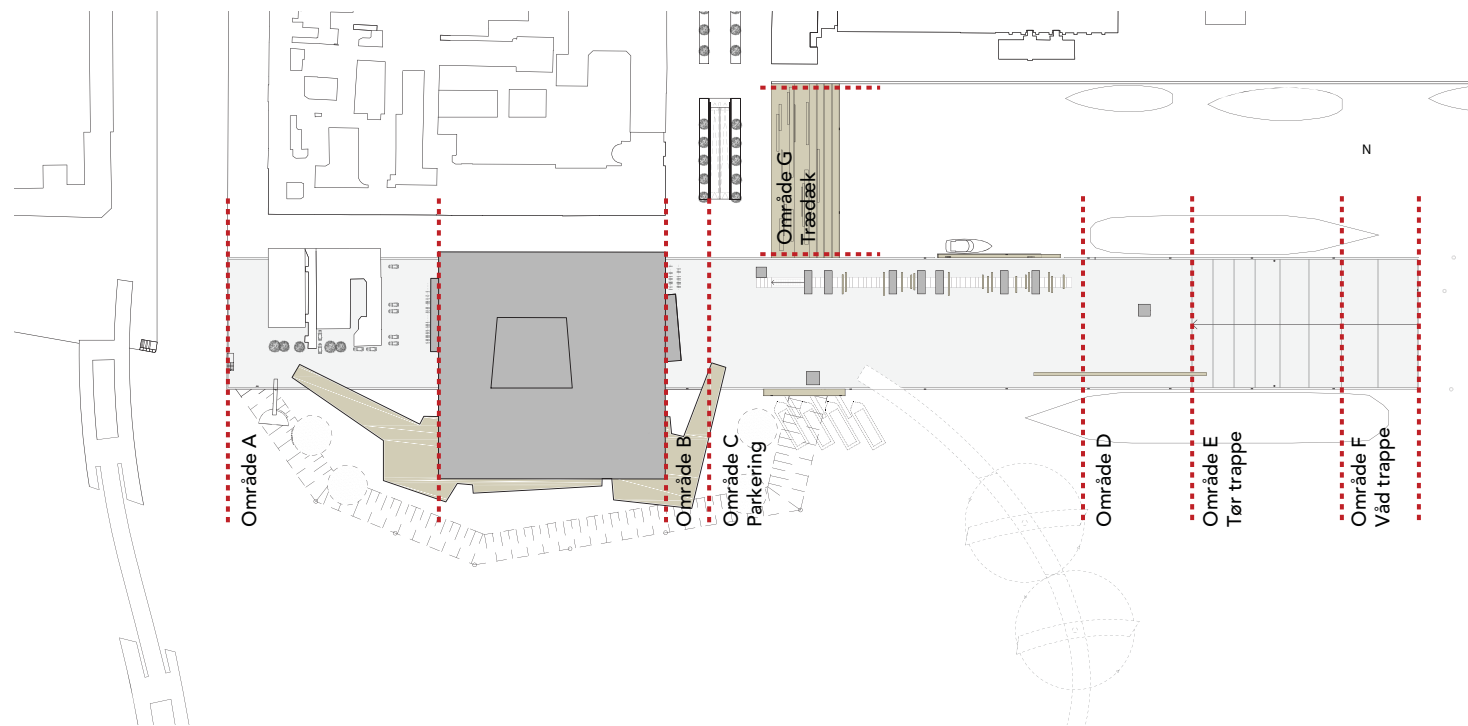
PRÆSENTATION 8 APRIL 2013 ARKITEKTUR OG DISPONERING
KVÆSTHUSSELSKABET LUNDGAARD & TRANBERG ARKITEKTER COWI A/S



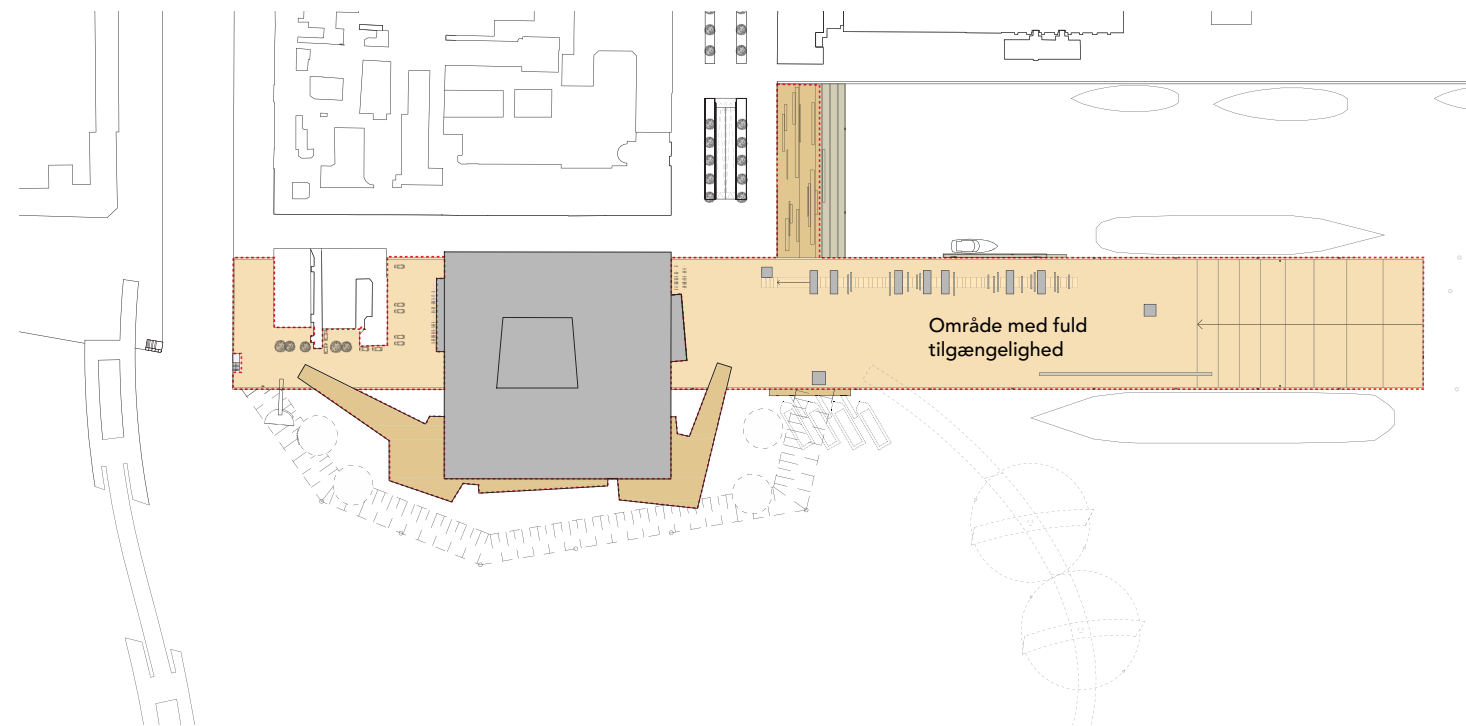
Hovedgreb



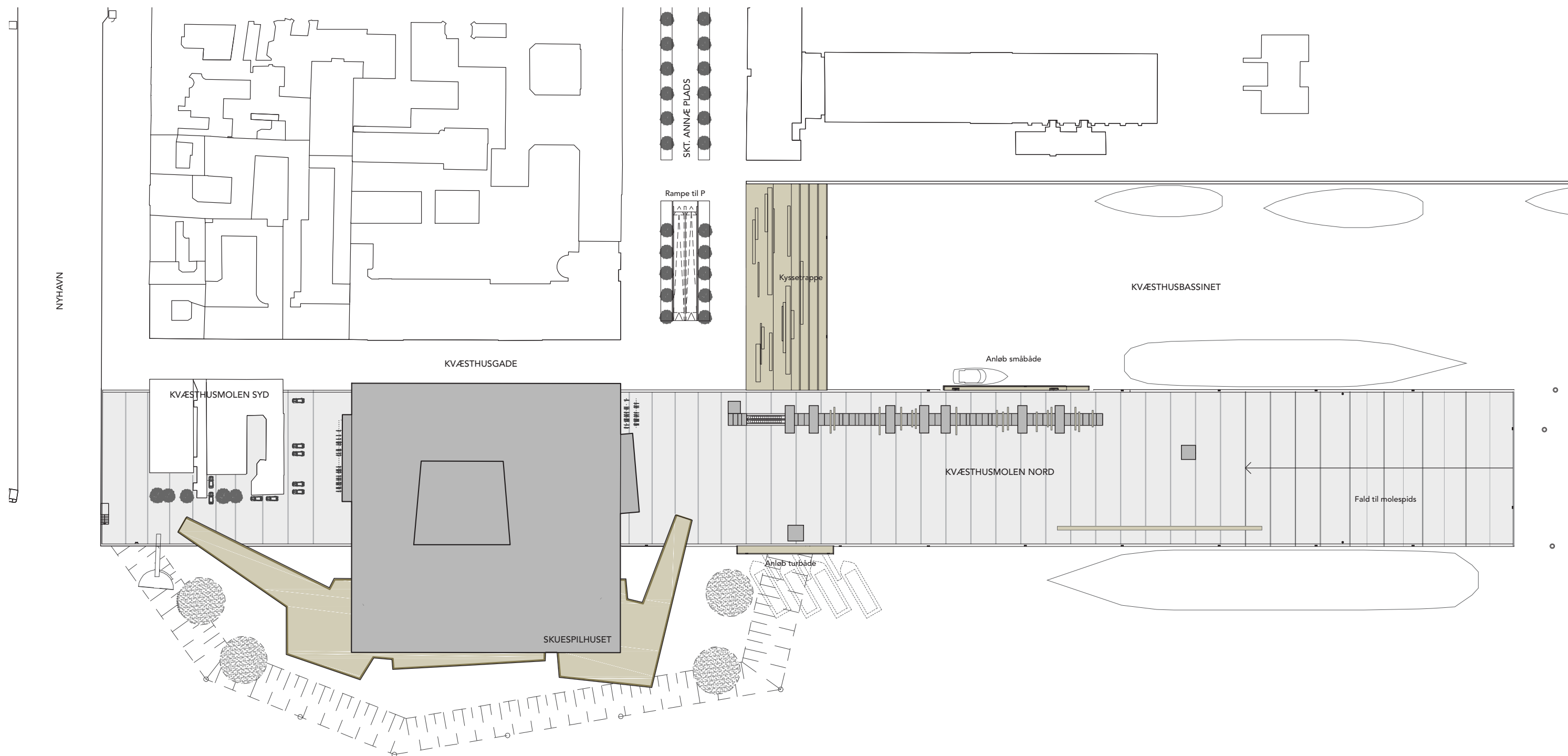
Anløb



Områder



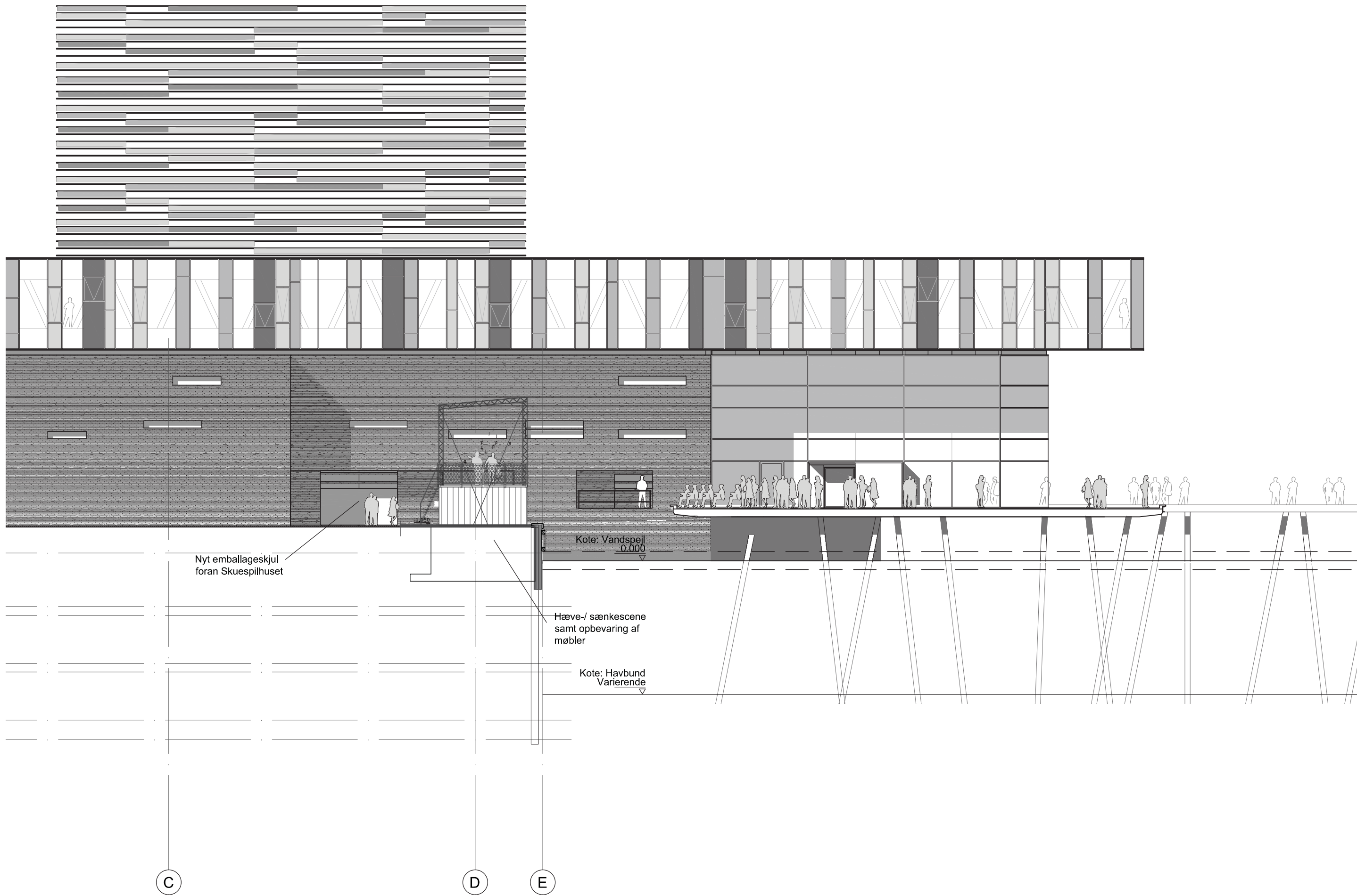
Tilgængelighed



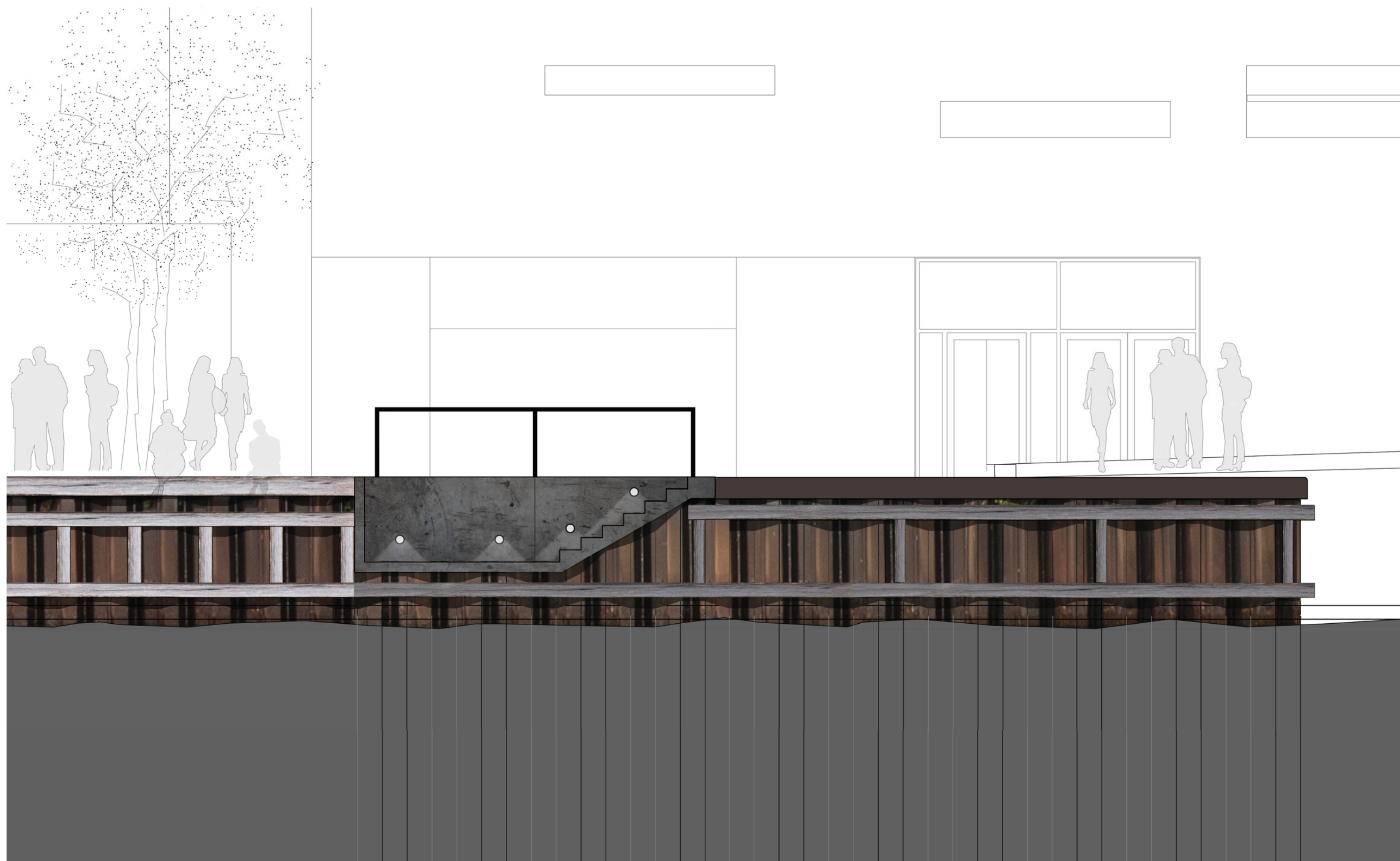
Situationsplan



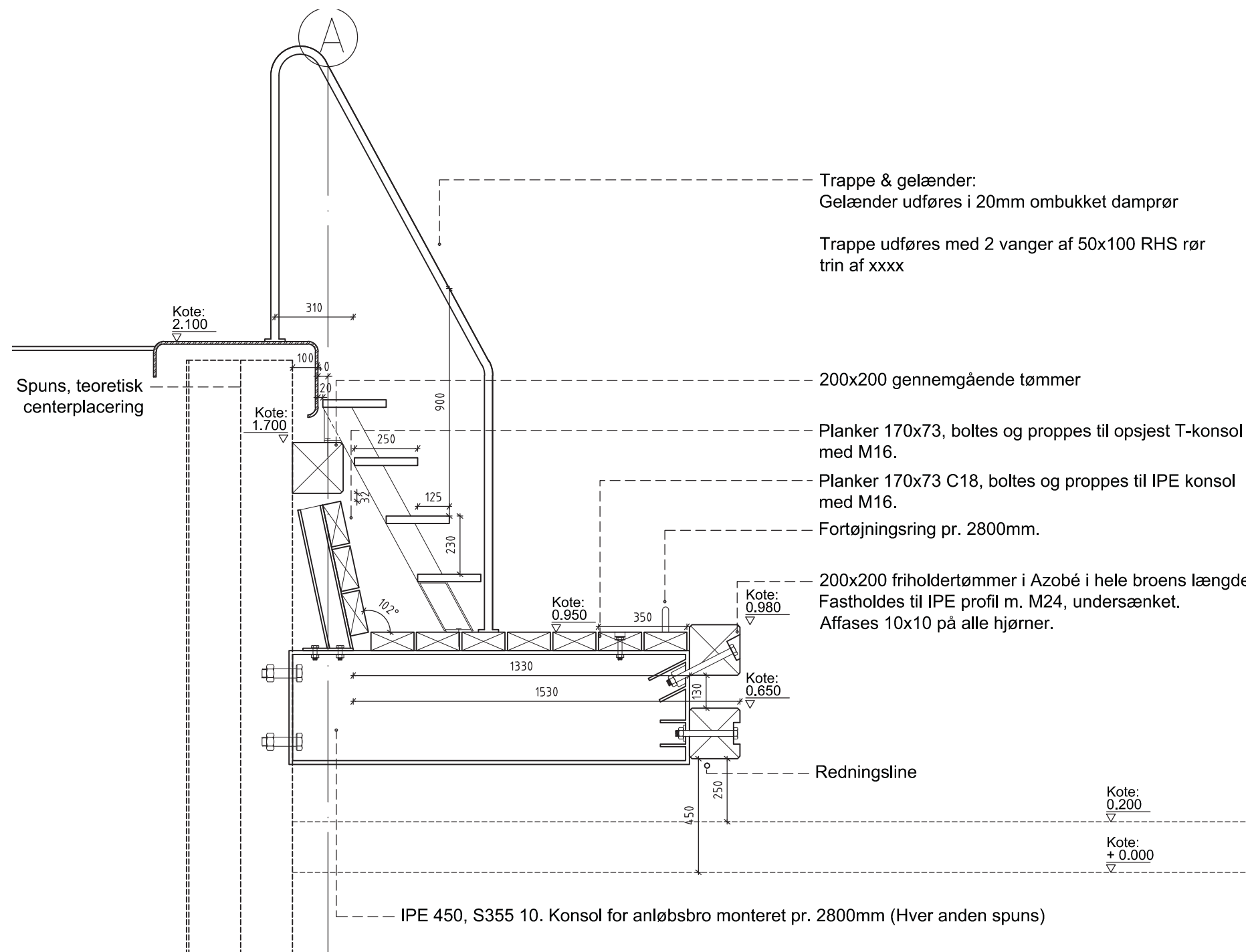
Udsigt fra Syd mod Skuespilhuset



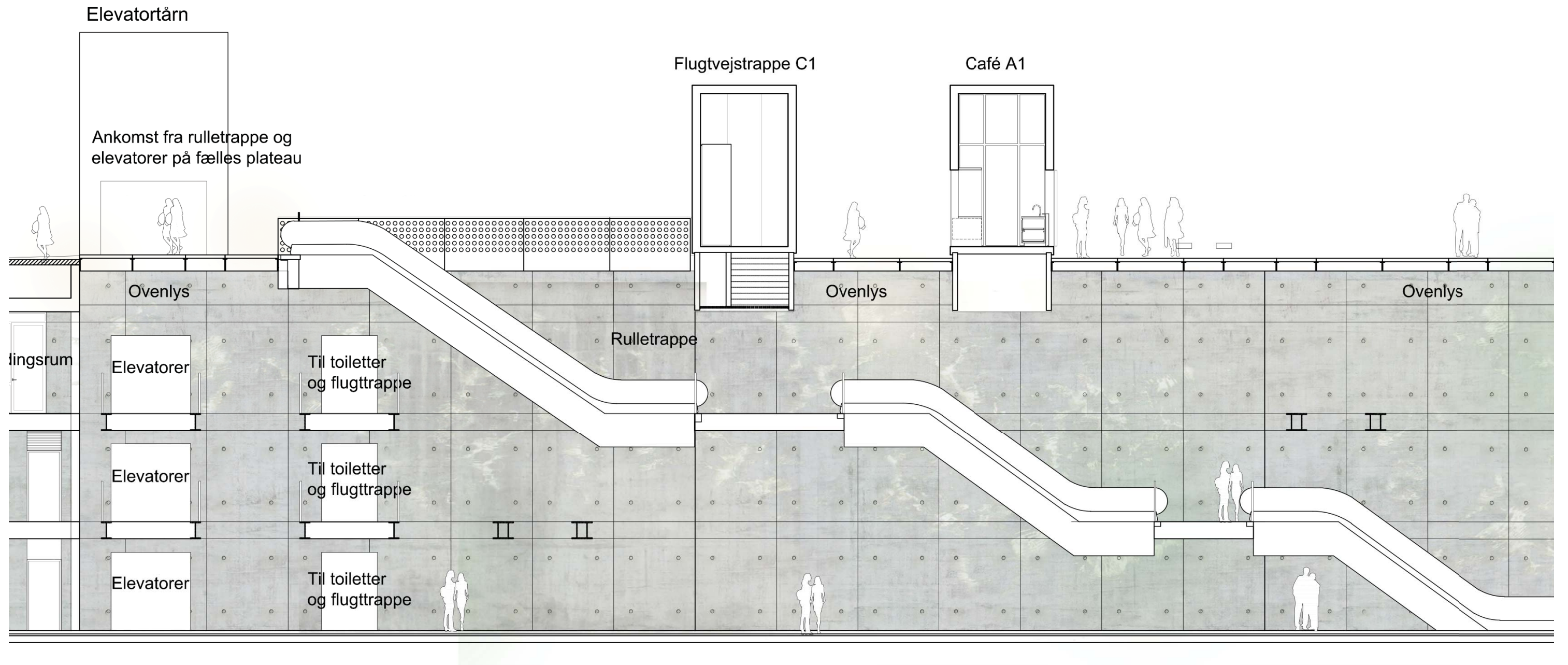
Anløb sydside ved Nyhavn



Anløb nordside ved Kvæsthusbassin



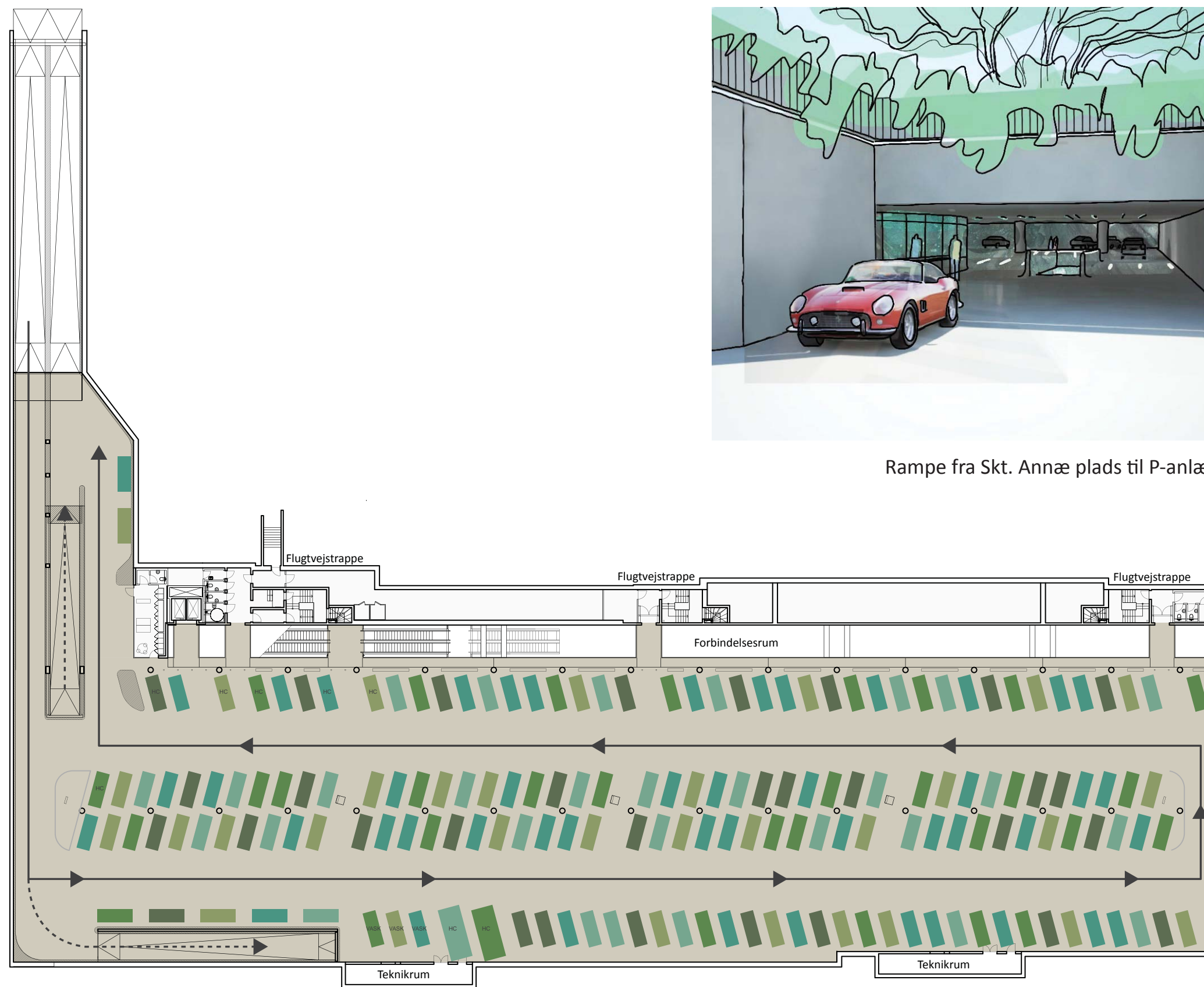
Ankomst til P-anlæg fra Kvæsthøsmølen



Snit gennem rulletrappen

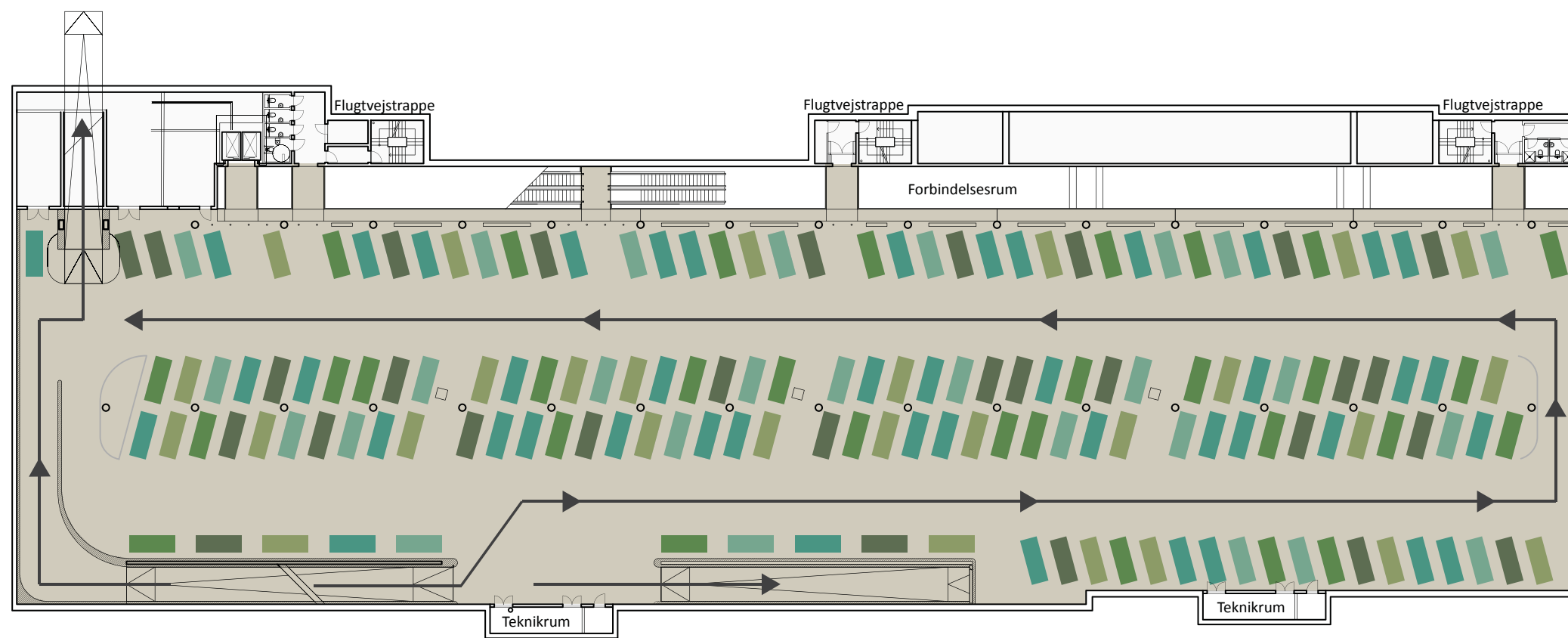


Plan, niveau -1

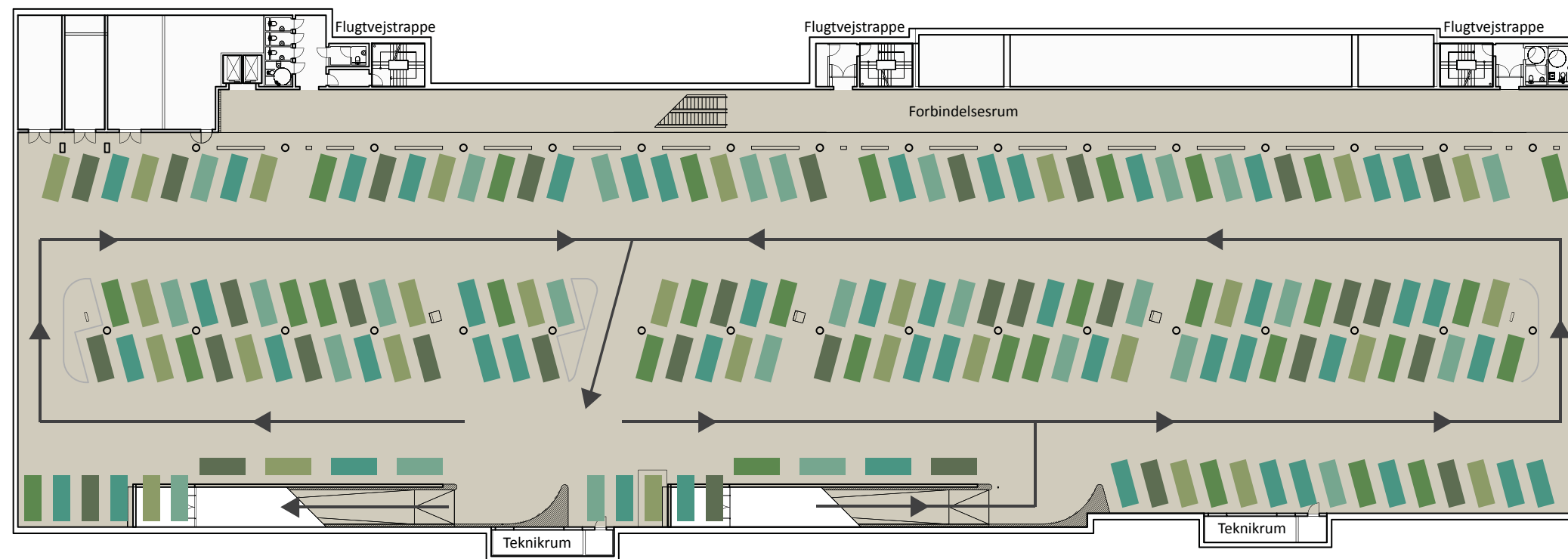


Rampe fra Skt. Annæ plads til P-anlæg

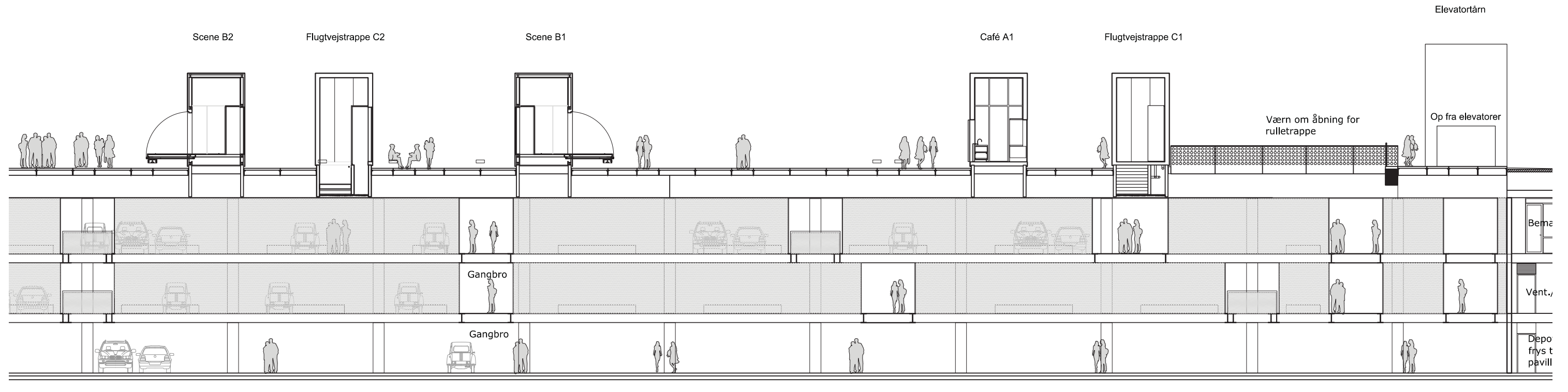
Plan, niveau -2



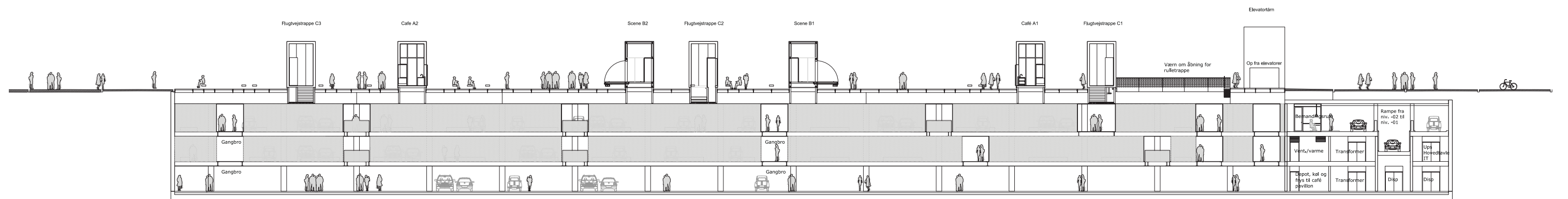
Plan, niveau -3



Sammenhæng mellem ovenlysspor, pavilloner og forbindelsesrum i P-anlæg



Snit gennem parkeringsanlæg og pavilloner med åbne/lukke-princip



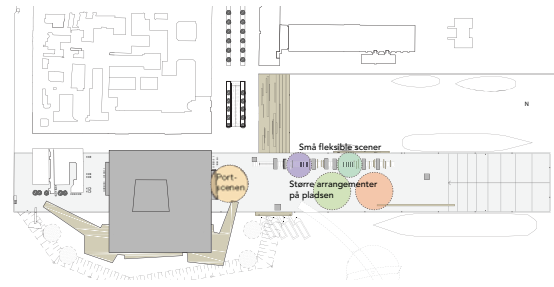


Forbindelsesrum



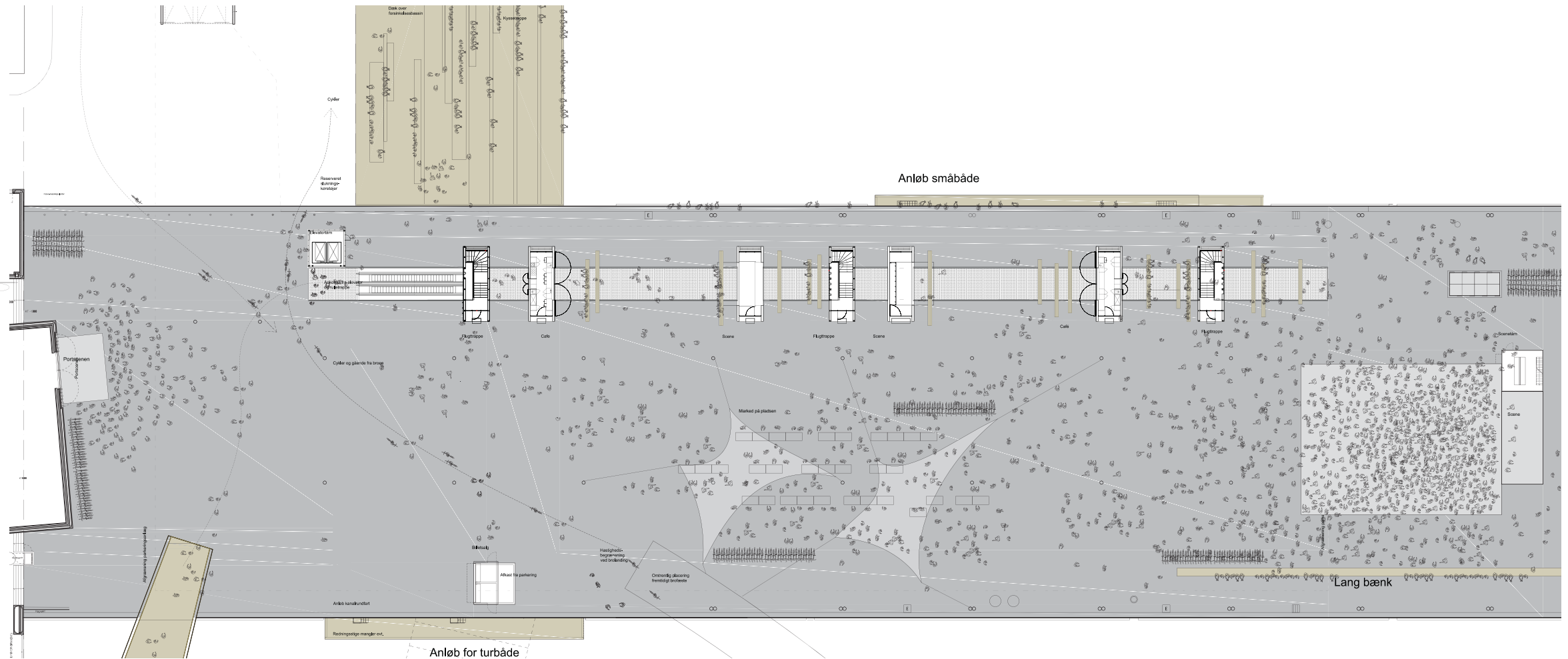
Aftenbelysning på molen

SMÅ OG MELLEMSTORE ARRANGEMENTER PÅ PLADSEN



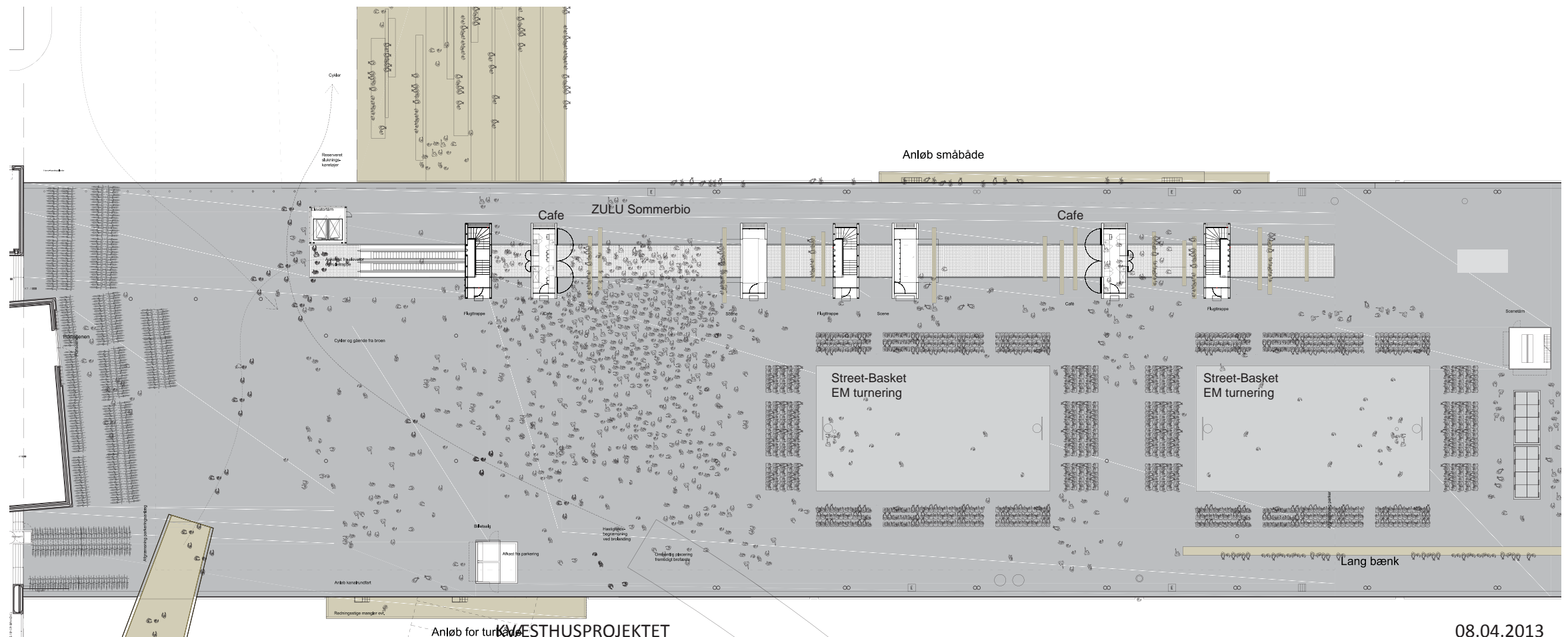
Scenarie 3: Vega koncert og markedsplads

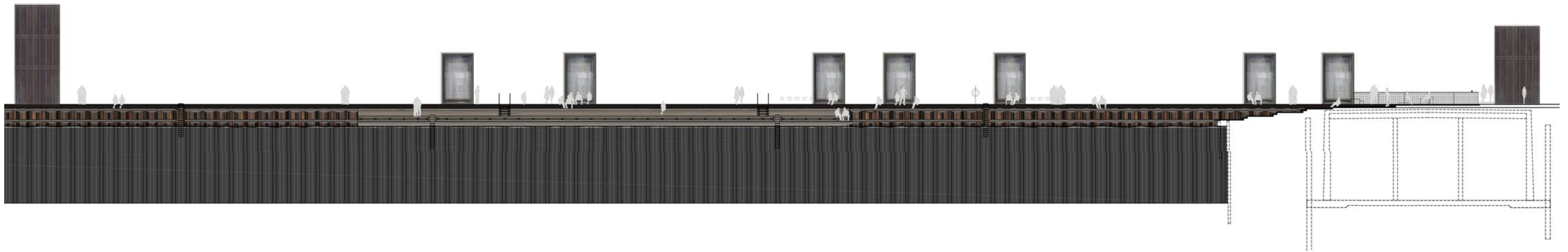
Foran scenen : 1055 pers
 På molen i alt : 2400 pers
 Cykelparkering: 320 cykler
 Toiletter: 8 toiletter



Scenarie 4: Basket og ZULU Sommerbio

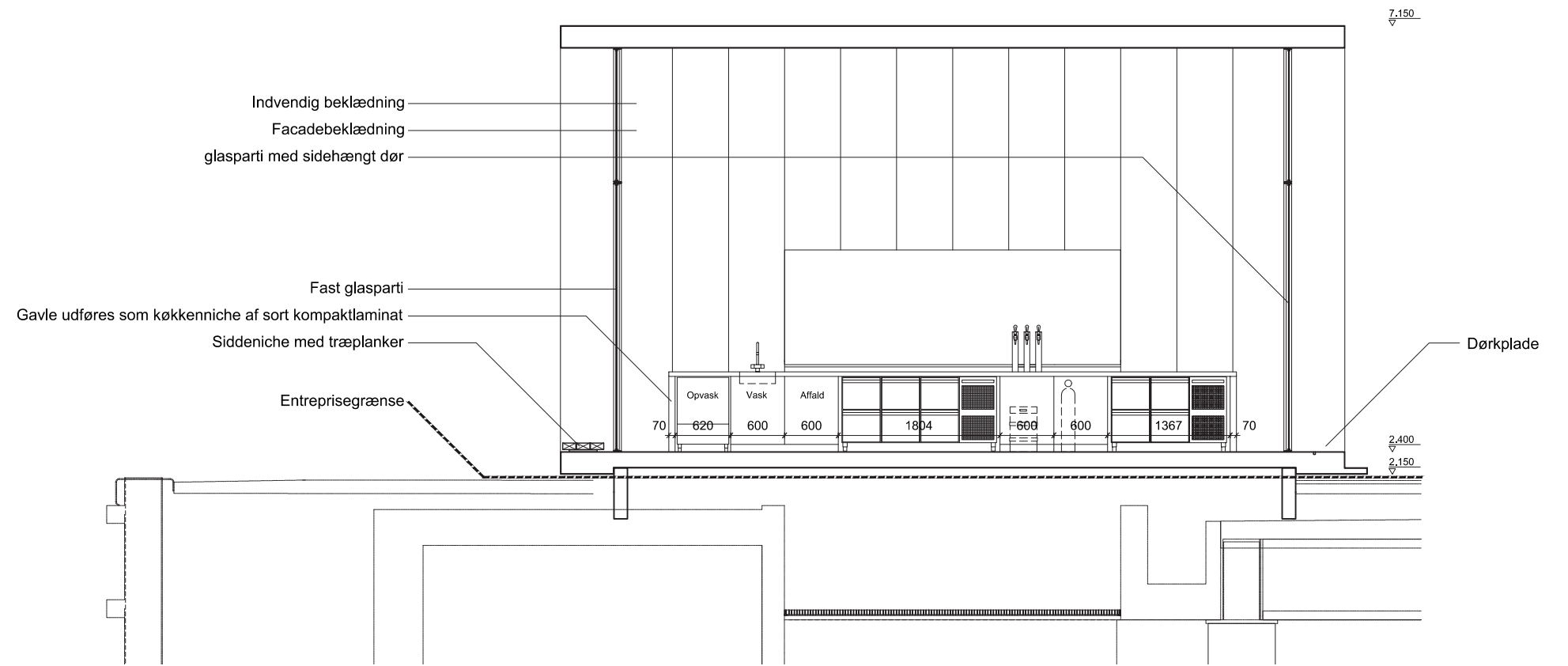
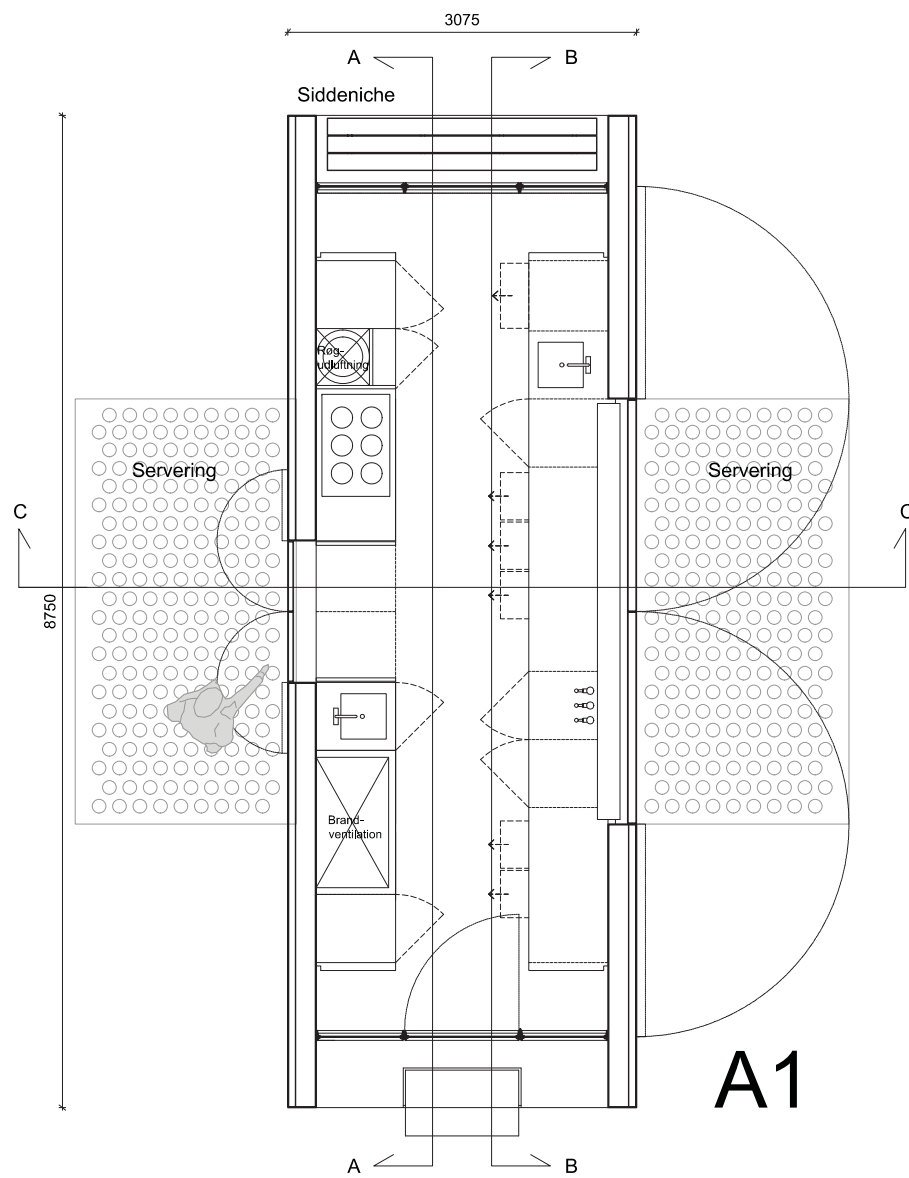
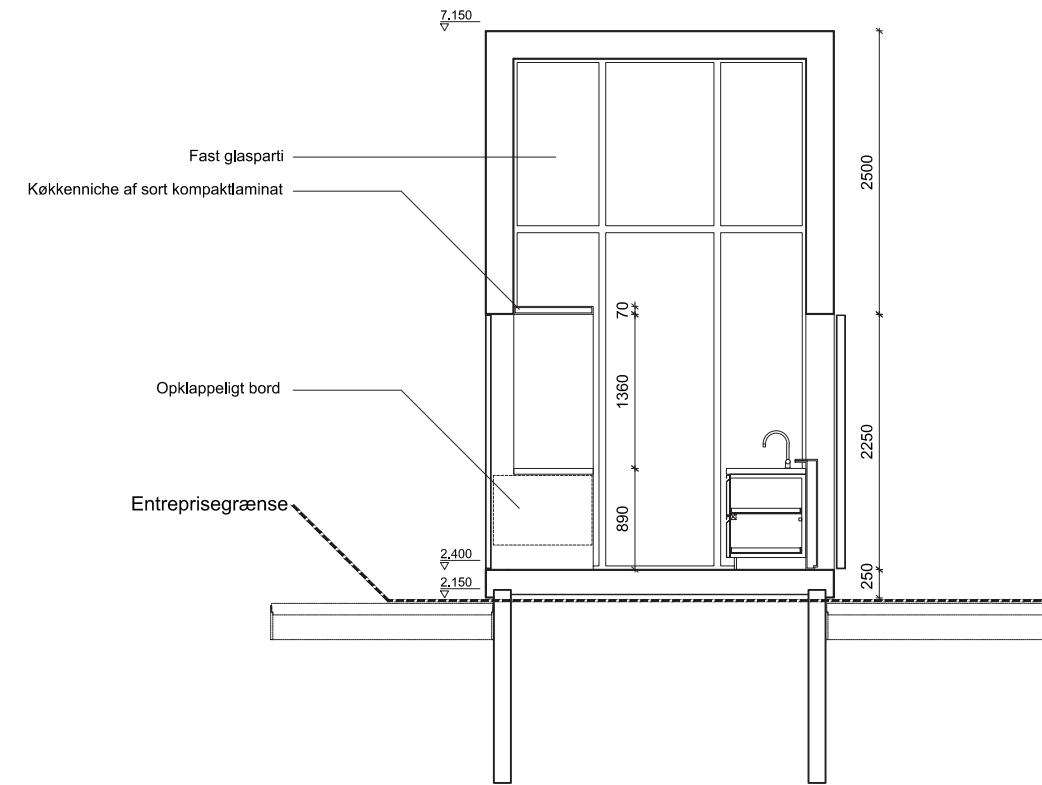
Foran sommerbio: 500 pers
 Sportstilskuere: 1.000 pers
 På molen i alt: 2.000 pers
 Cykelparkering: 600 cykler
 Toiletter: 16 toiletter





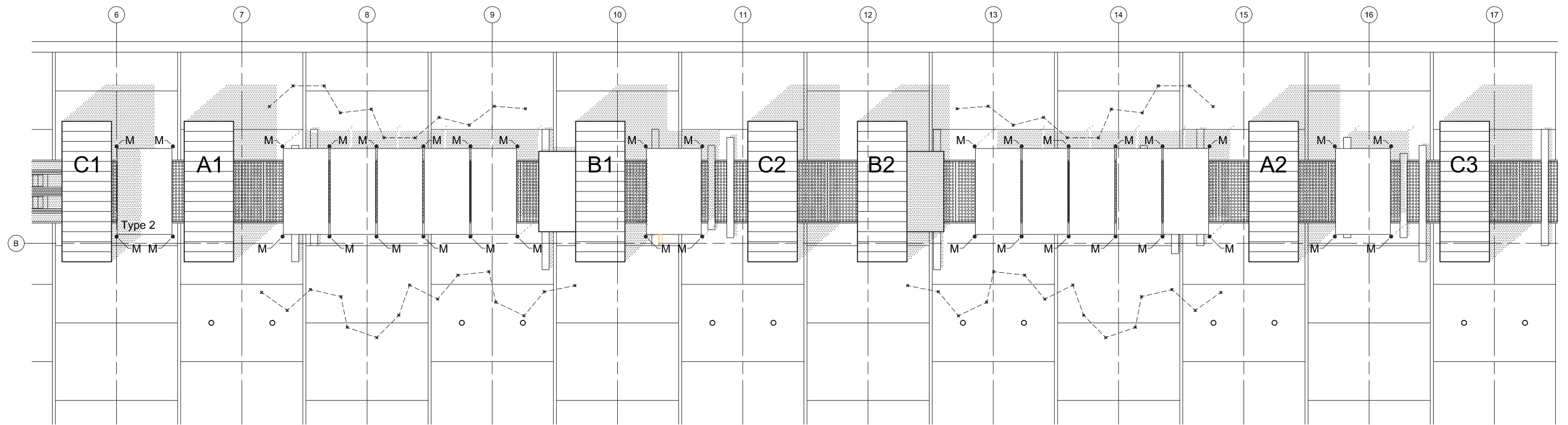
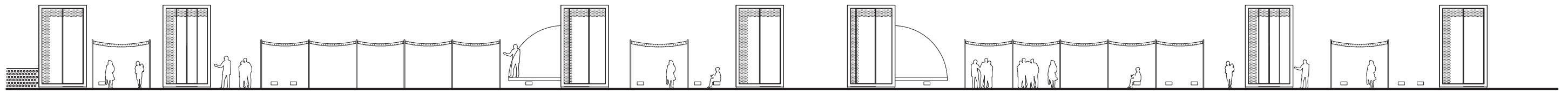
Opstalt mod vest

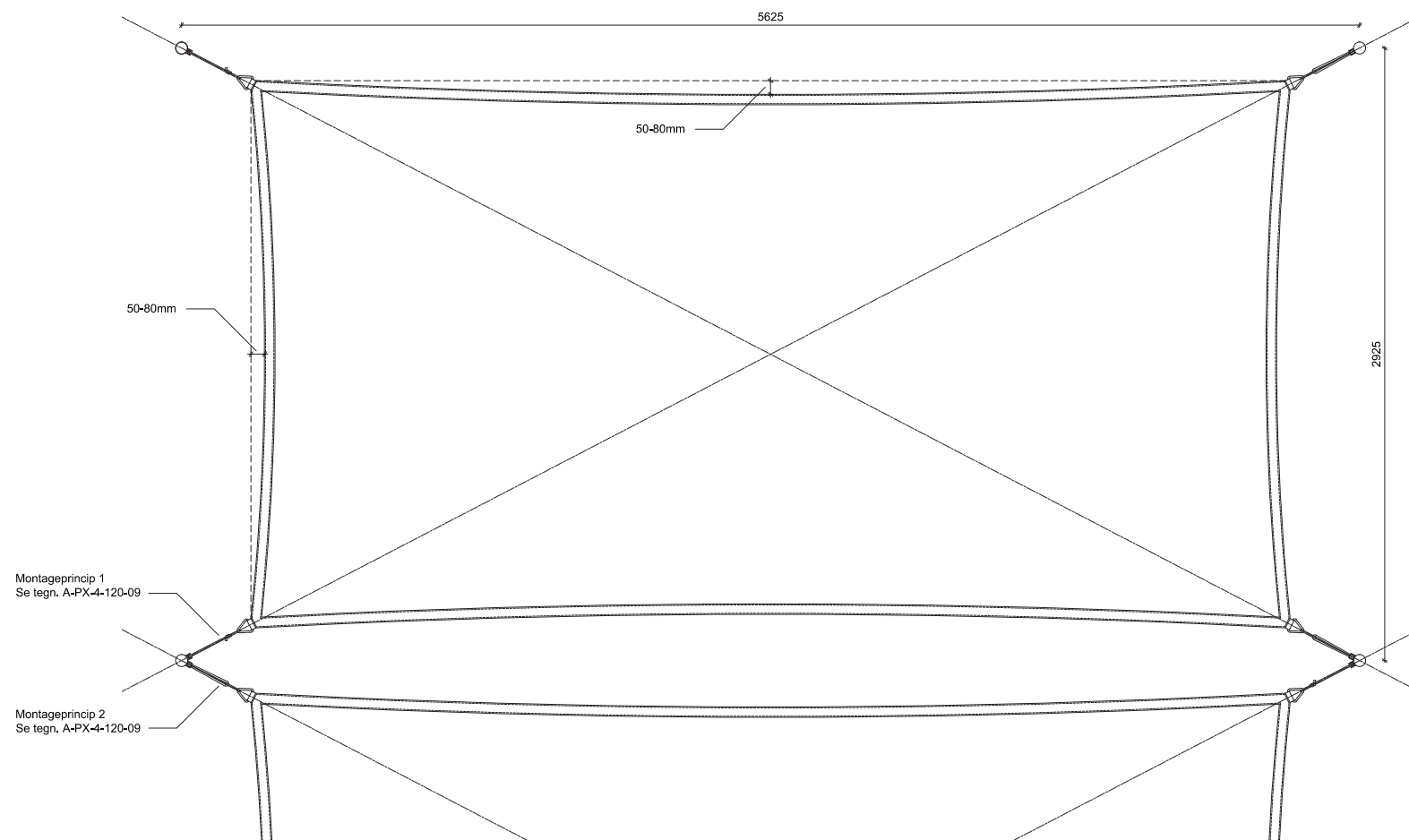




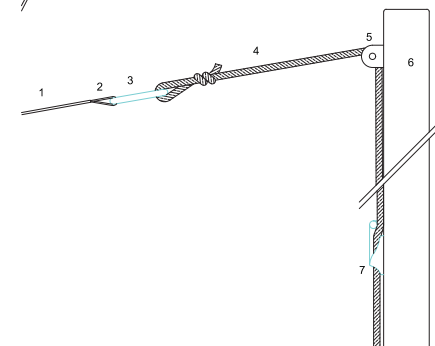
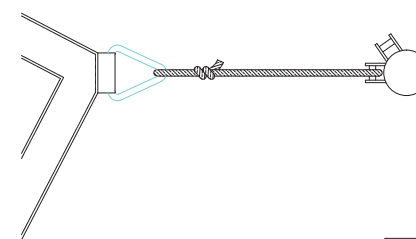
Café pavillon

Læskabende sejl mellem pavilloner og på pladsen

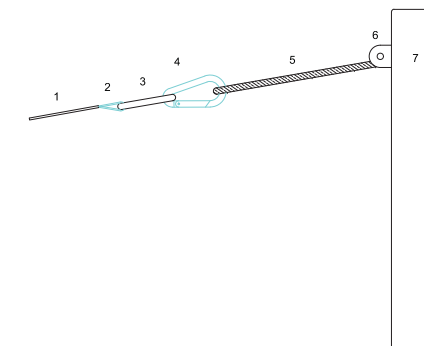
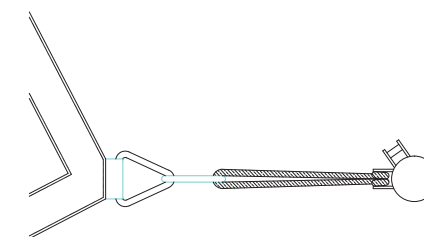




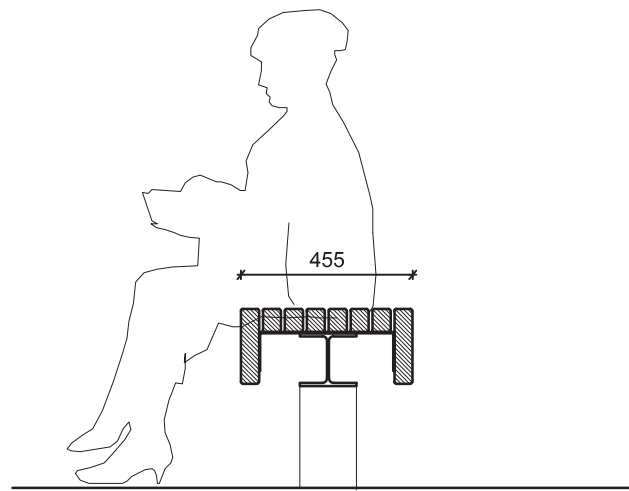
Montageprincip 1, plan



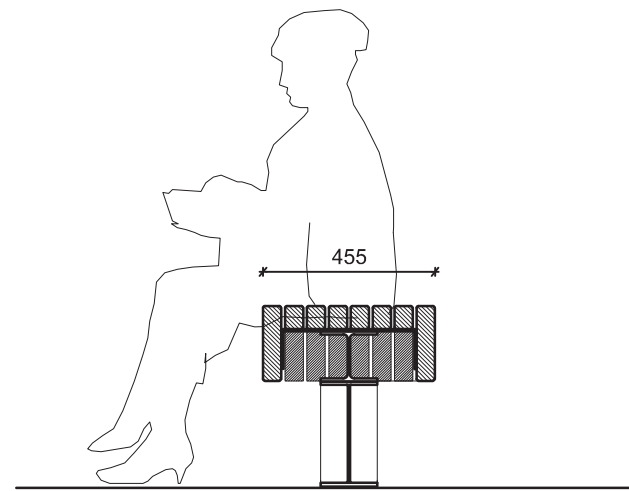
Montageprincip 2, plan



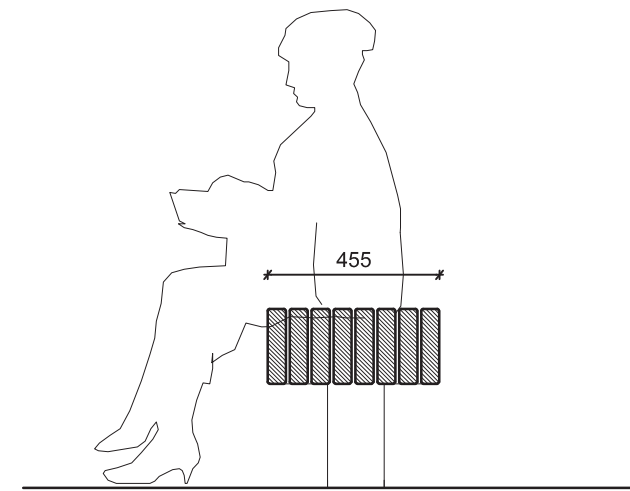
Bænke mellem pavillonerne



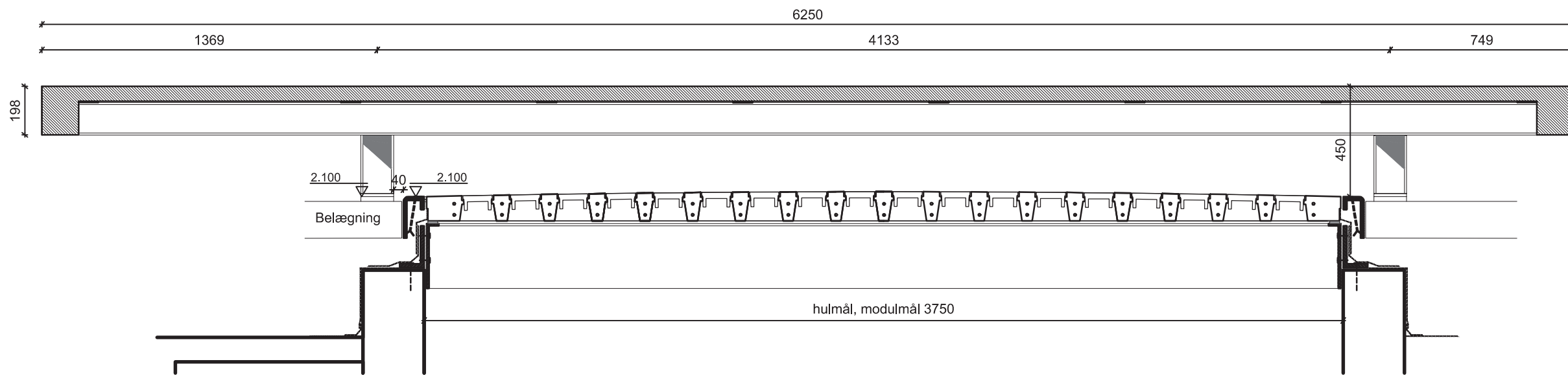
Snit gennem overlys



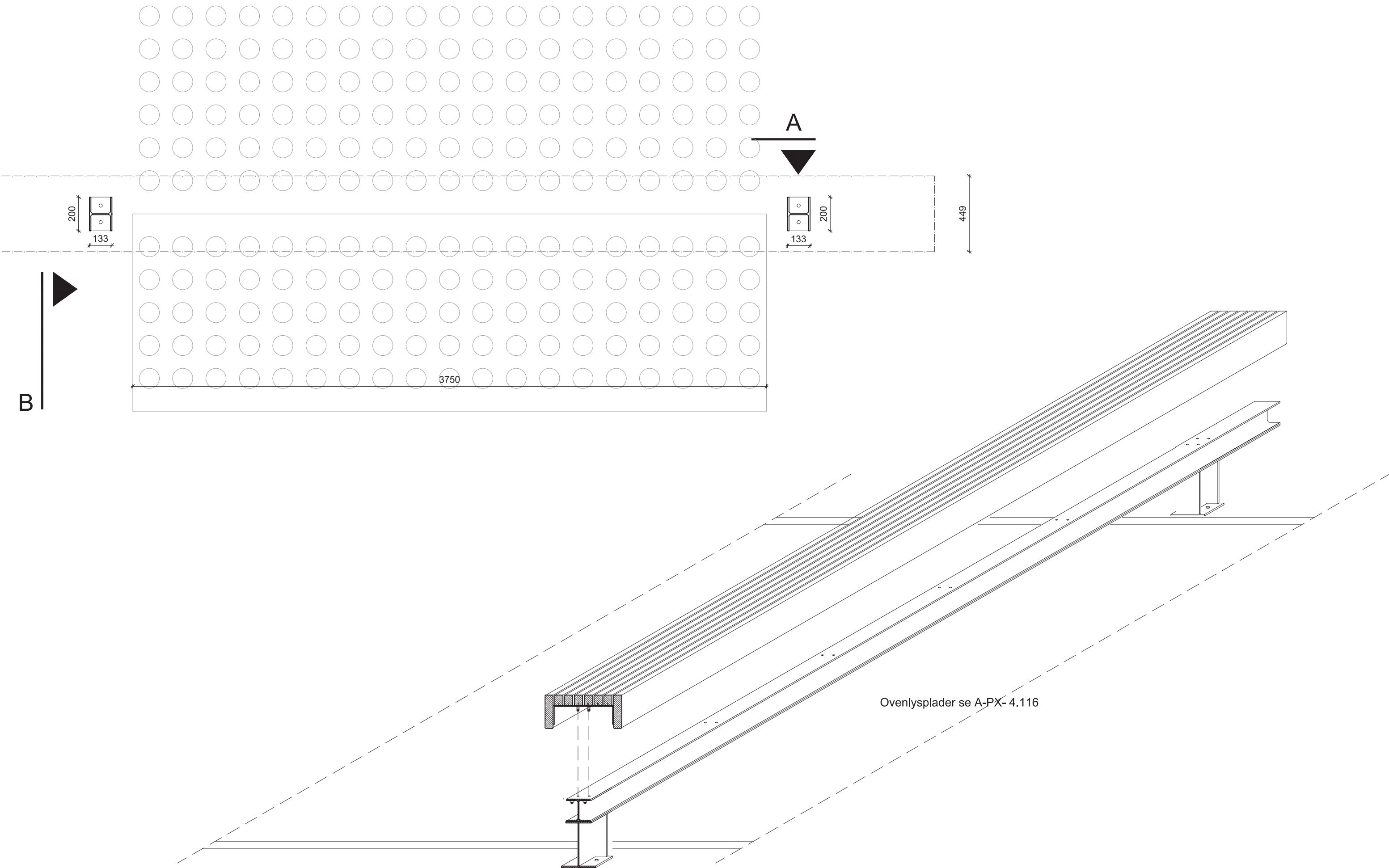
Snit gennem ben

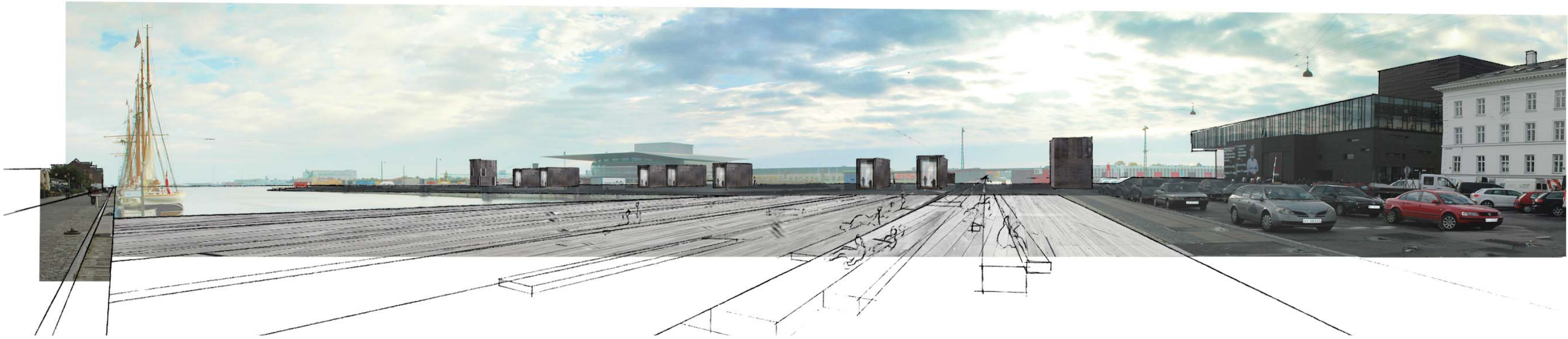


Opstalt af bænk fra enden

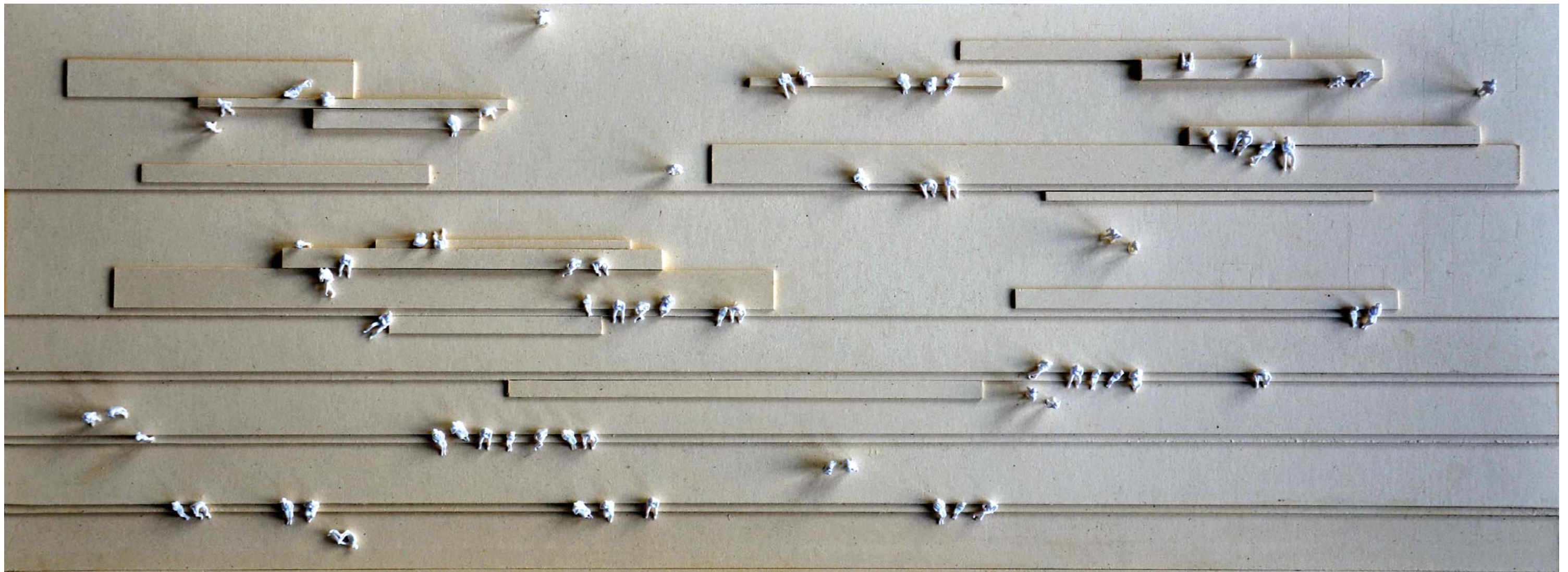


Opstalt af bænk fra siden

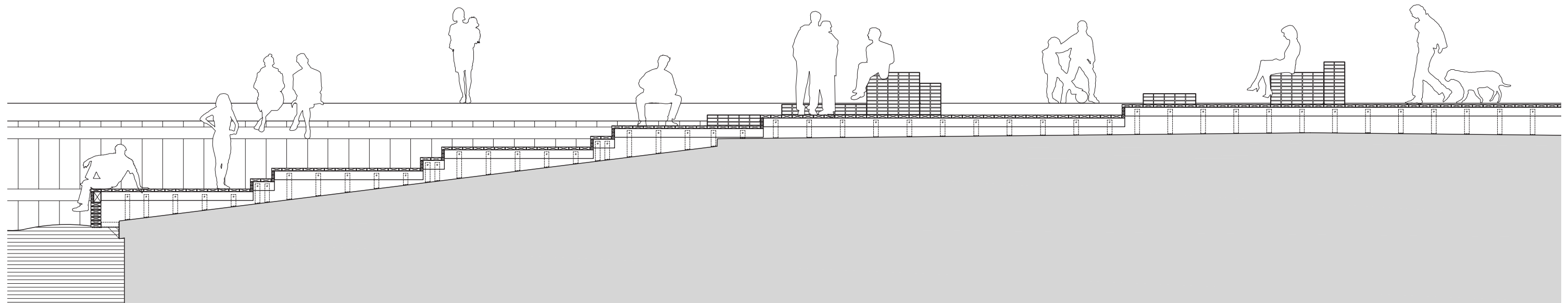
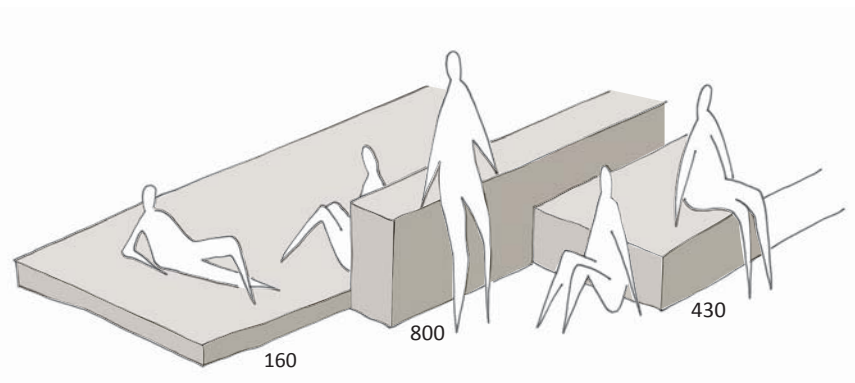




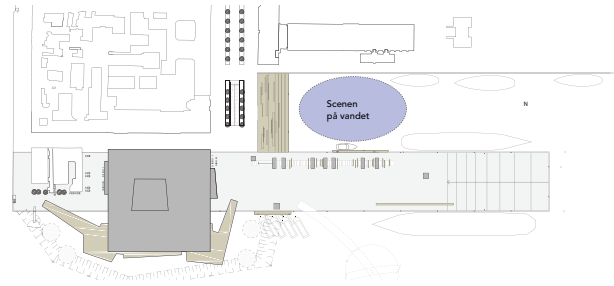
Udsigt fra Kyssetrappen



Plan over Kyssetrappen

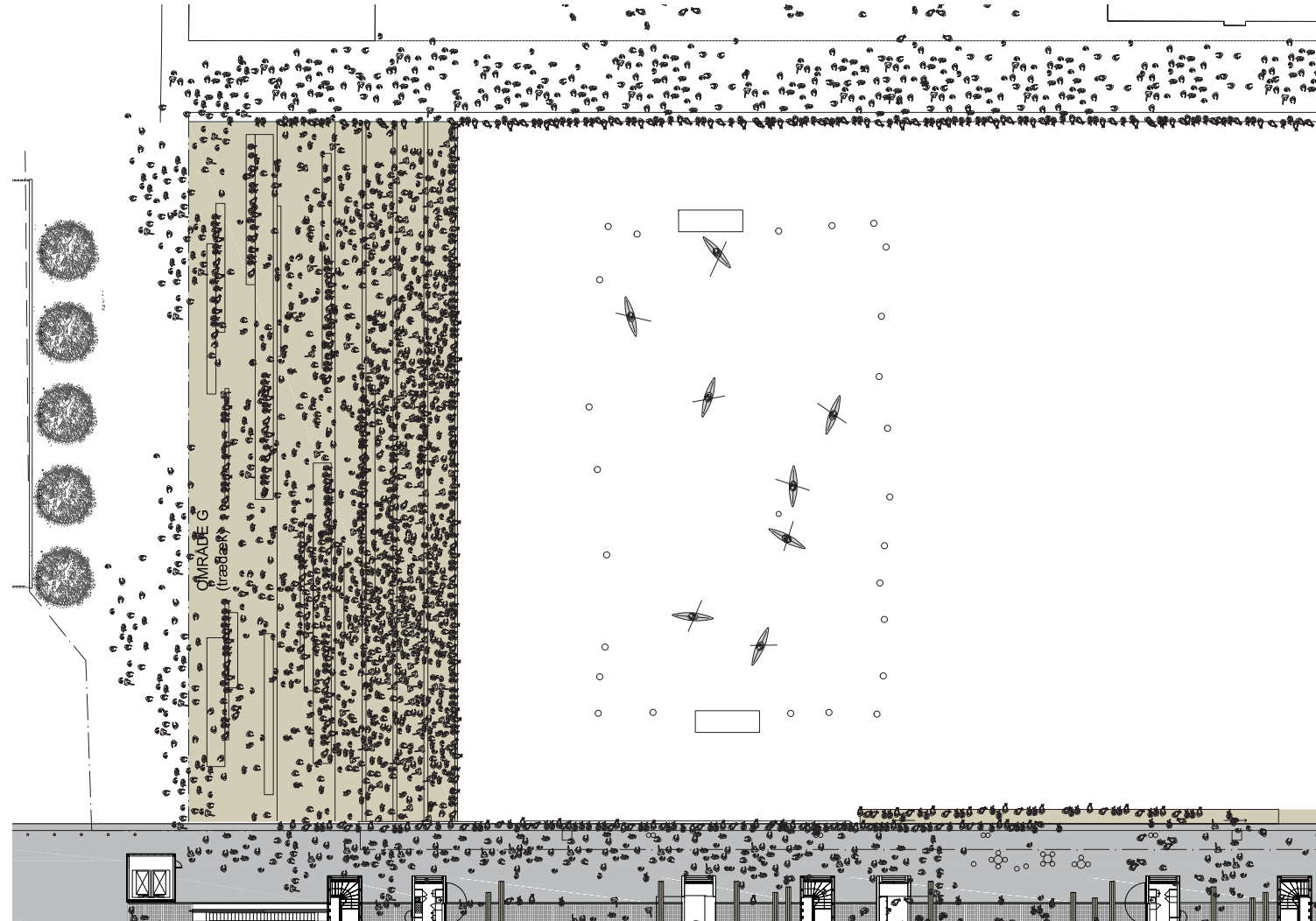


SCENEN PÅ VANDET

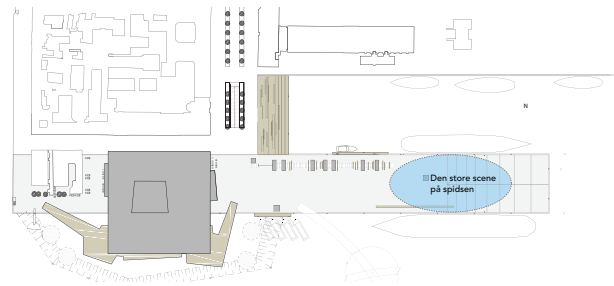


Scenarie 7: Vandpolo "scenen på vandet"

Tilskuere på Kyssetrappen: 800 pers
 Tilskuere i alt: 1.800 pers

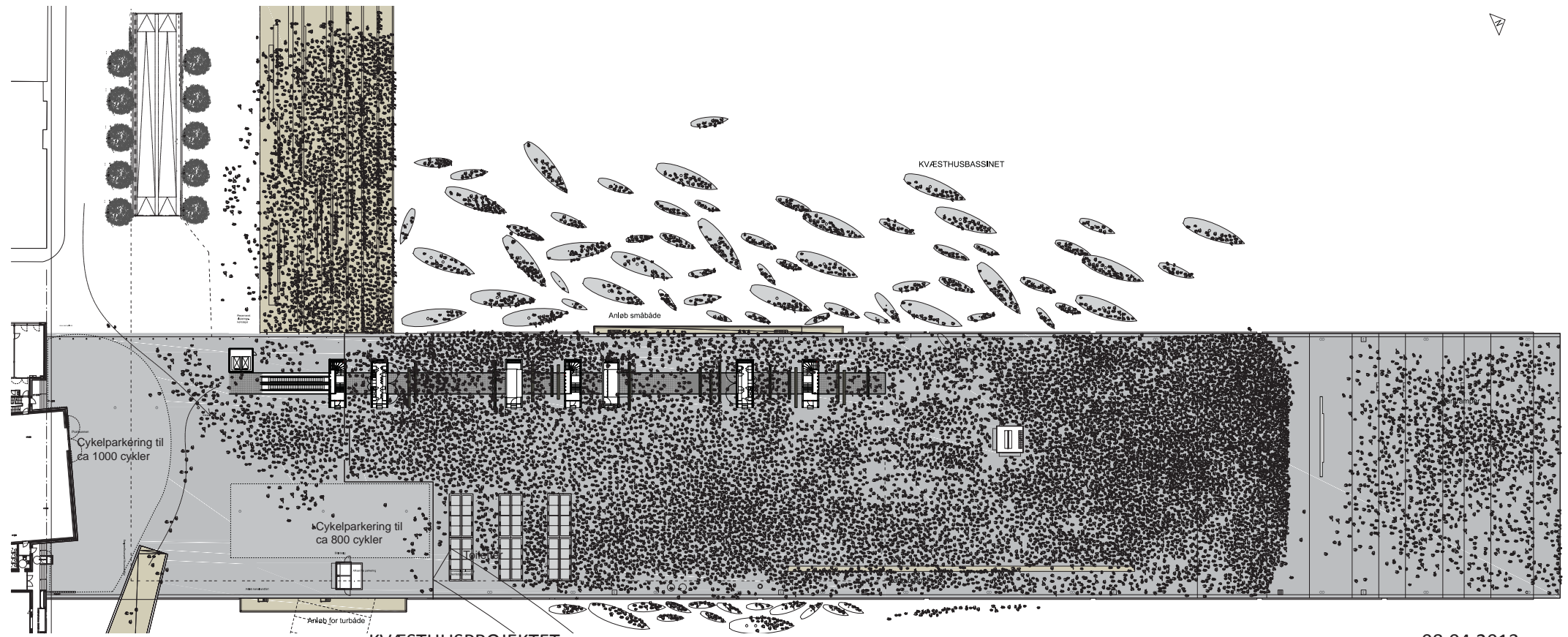


DEN STORE SCENE PÅ SPIDSEN



Scenarie 8: VM i fodbold på molen

Tilskuere i alt: 15.000 pers
 Cykelparkering: 1800 cykler
 Toiletter: 48 toiletter





Plan, aftenbelysning